

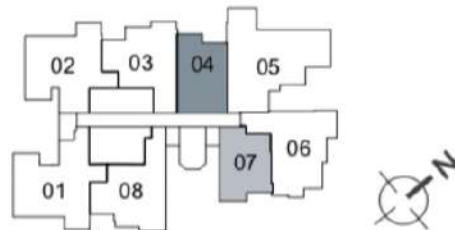
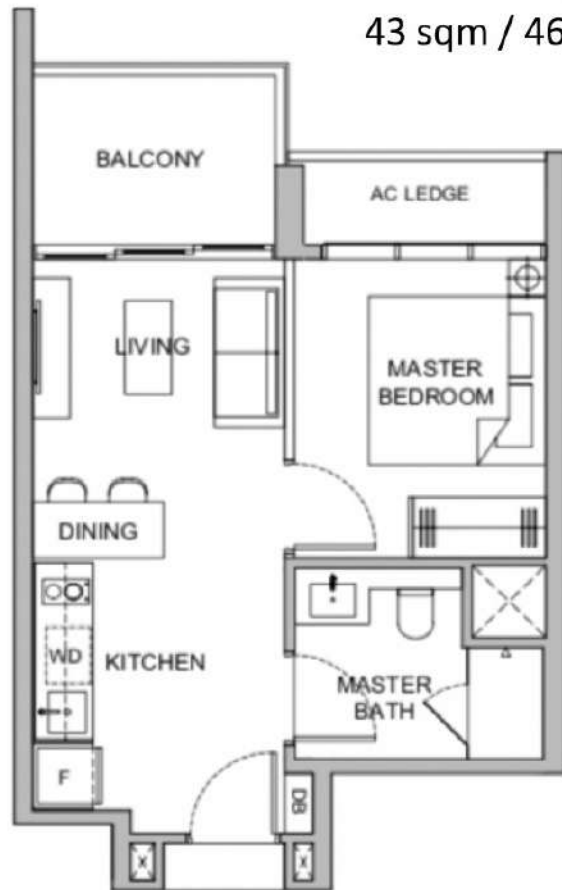
1 BEDROOM

Type A1

#06-04 to #13-04

#15-04 to #24-04

43 sqm / 463 sqft



Type A2

#06-07 to #13-07

#15-07 to #24-07

41 sqm / 441 sqft

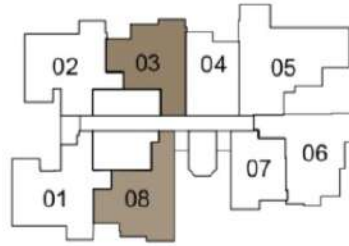


Plans are not to scale and subject to any changes as may be required or approved by the relevant authorities and do not form part of an offer or contract. All floor areas indicated are inclusive of AC Ledge, Balcony and Strata Void where applicable. All floor areas are estimates only and subject to final survey. The balcony shall not be enclosed unless with the approved balcony screen. For an illustration of the approved balcony screen, please refer to Annexure 1 of this brochure

2 BEDROOM

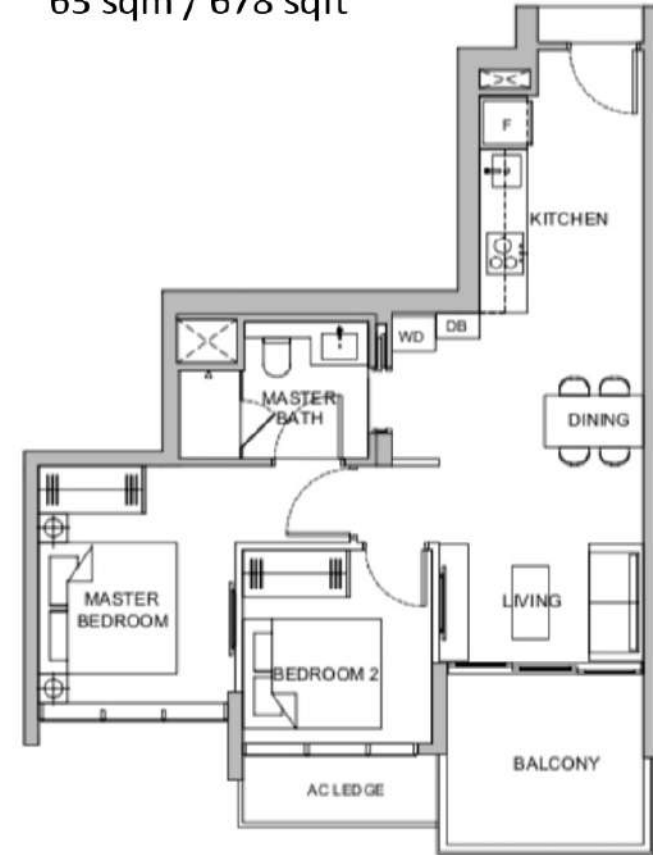
Type B1

#06-03 to #13-03
#15-03 to #24-03
59 sqm / 635 sqft



Type B2

#06-08 to #13-08
#15-08 to #24-08
63 sqm / 678 sqft

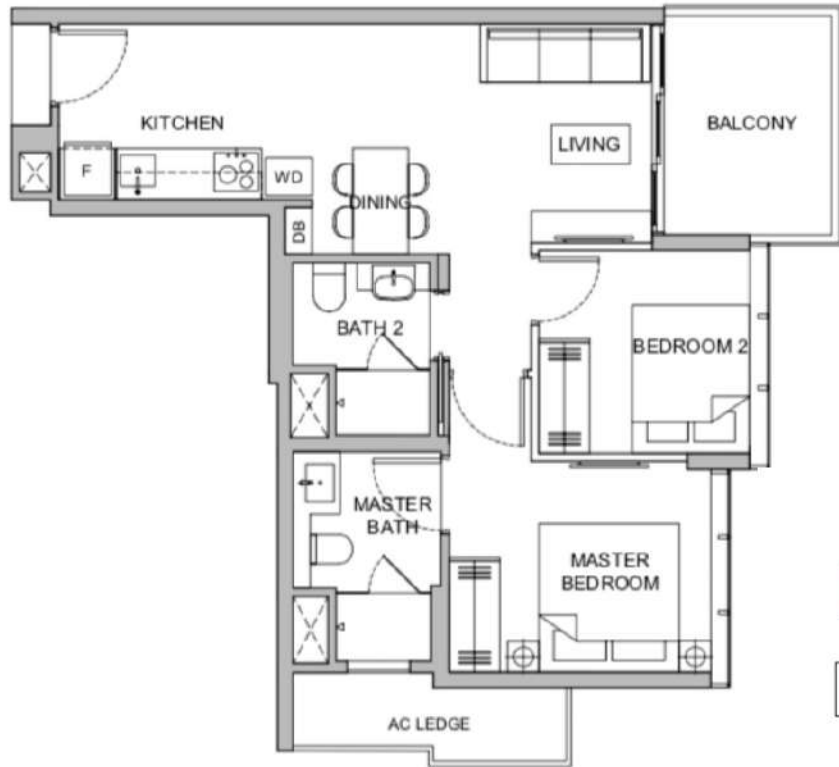


Plans are not to scale and subject to any changes as may be required or approved by the relevant authorities and do not form part of an offer or contract. All floor areas indicated are inclusive of AC Ledge, Balcony and Strata Void where applicable. All floor areas are estimates only and subject to final survey. The balcony shall not be enclosed unless with the approved balcony screen. For an illustration of the approved balcony screen, please refer to Annexure 1 of this brochure

2 BEDROOM

Type B3

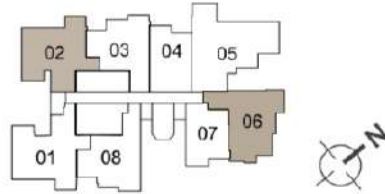
#06-06 to #13-06
#15-06 to #24-06
65 sqm / 700 sqft



2 BEDROOM + STUDY

Type B4S

#06-02 to #13-02
#15-02 to #27-02
70 sqm / 753 sqft



Plans are not to scale and subject to any changes as may be required or approved by the relevant authorities and do not form part of an offer or contract. All floor areas indicated are inclusive of AC Ledge, Balcony and Strata Void where applicable. All floor areas are estimates only and subject to final survey. The balcony shall not be enclosed unless with the approved balcony screen. For an illustration of the approved balcony screen, please refer to Annexure 1 of this brochure

2 BEDROOM + STUDY

Type B5S

#06-01 to #13-01
#15-01 to #24-01
72 sqm / 775 sqft



3 BEDROOM

Type C1

#06-05 to #13-05
#15-05 to #27-05
87 sqm / 936 sqft



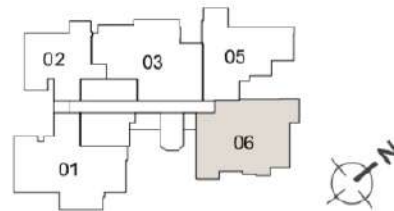
Plans are not to scale and subject to any changes as may be required or approved by the relevant authorities and do not form part of an offer or contract. All floor areas indicated are inclusive of AC Ledge, Balcony and Strata Void where applicable. All floor areas are estimates only and subject to final survey. The balcony shall not be enclosed unless with the approved balcony screen. For an illustration of the approved balcony screen, please refer to Annexure 1 of this brochure

2+1 BEDROOM (DUAL KEY)

Type B6DK

#25-06 to #27-06

108 sqm / 1163 sqft

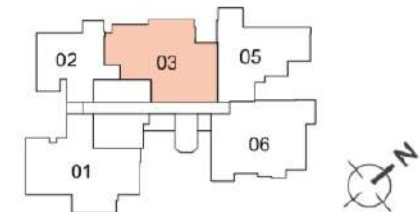


3 BEDROOM (PREMIUM)

Type C2P

#25-03 to #27-03

107 sqm / 1152 sqft



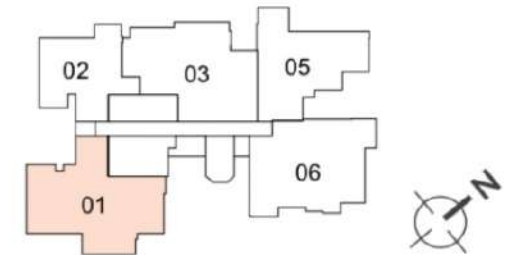
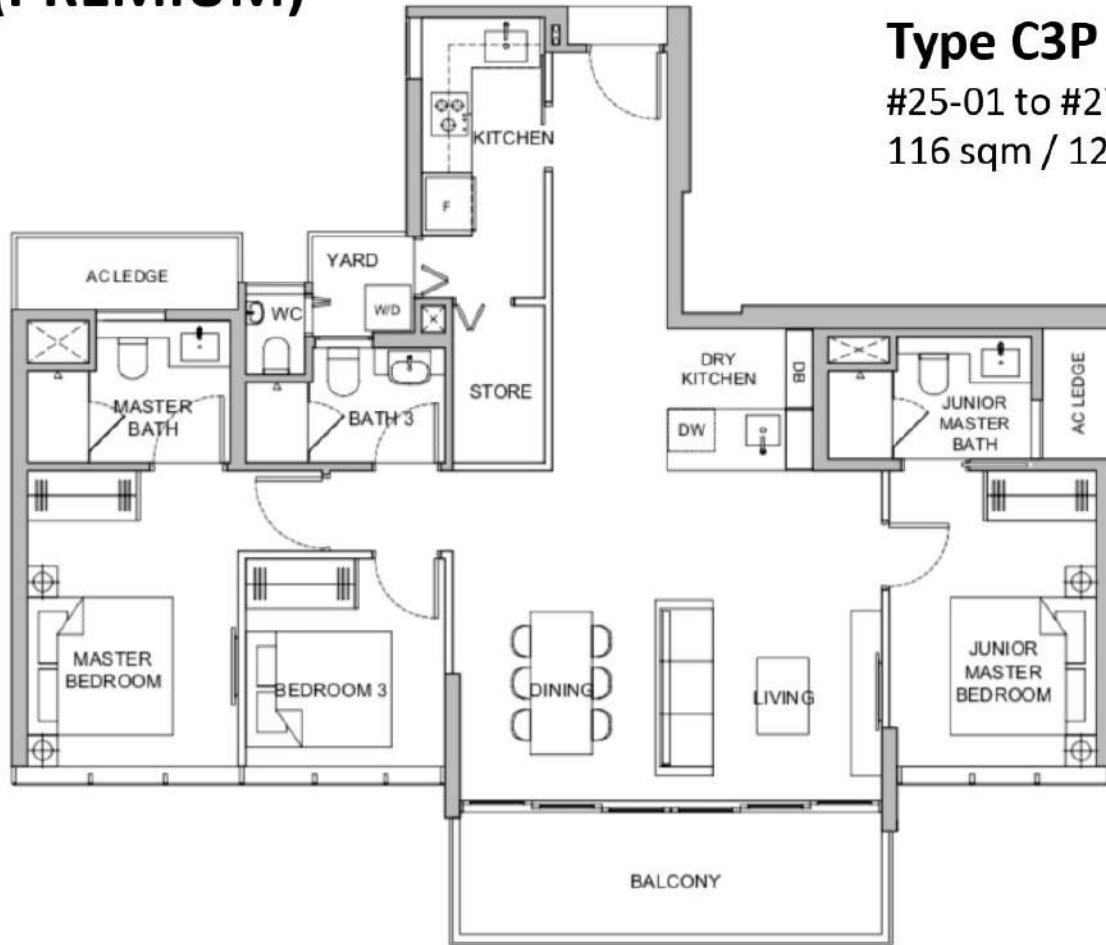
Plans are not to scale and subject to any changes as may be required or approved by the relevant authorities and do not form part of an offer or contract. All floor areas indicated are inclusive of AC Ledge, Balcony and Strata Void where applicable. All floor areas are estimates only and subject to final survey. The balcony shall not be enclosed unless with the approved balcony screen. For an illustration of the approved balcony screen, please refer to Annexure 1 of this brochure

3 BEDROOM (PREMIUM)

Type C3P

#25-01 to #27-01

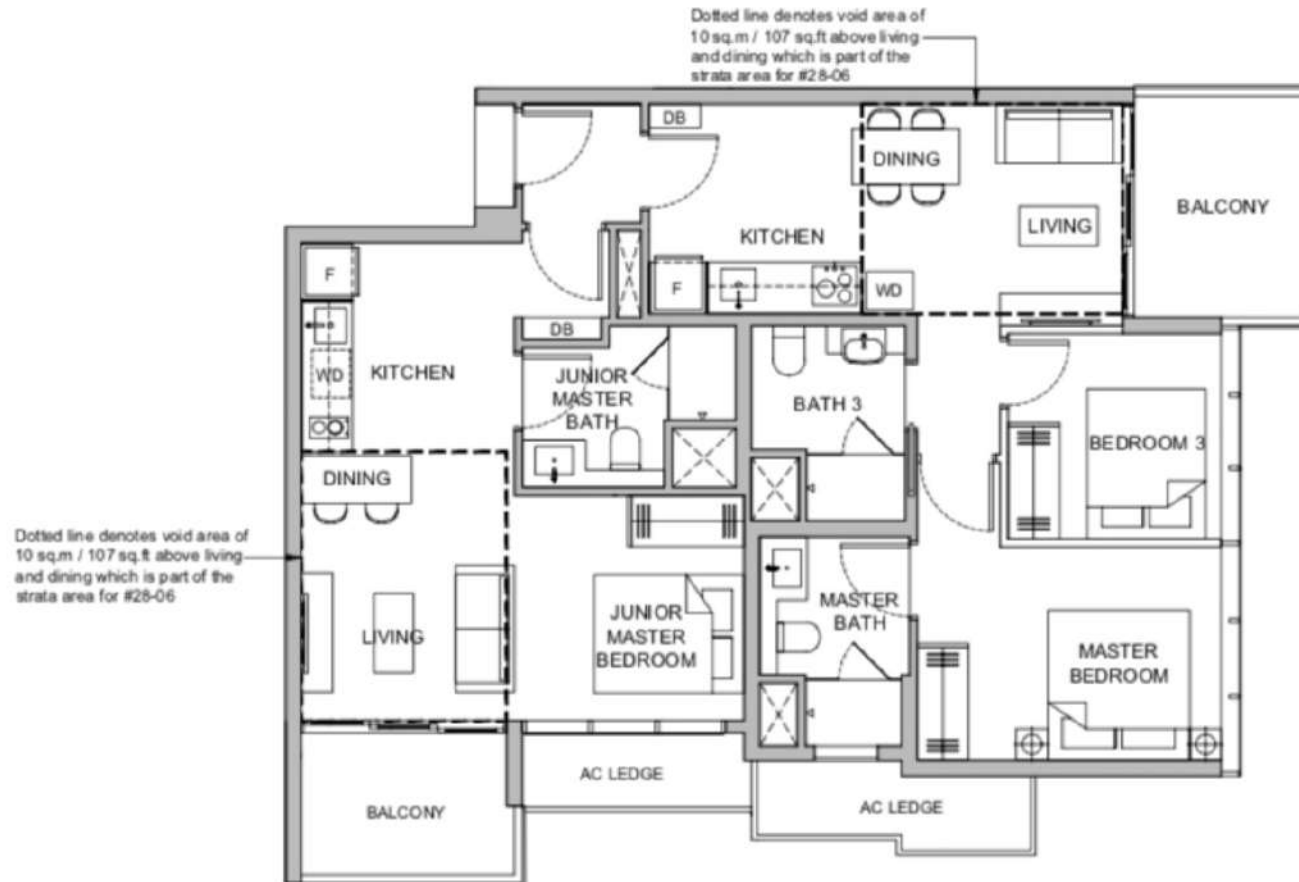
116 sqm / 1249 sqft



Plans are not to scale and subject to any changes as may be required or approved by the relevant authorities and do not form part of an offer or contract. All floor areas indicated are inclusive of AC Ledge, Balcony and Strata Void where applicable. All floor areas are estimates only and subject to final survey. The balcony shall not be enclosed unless with the approved balcony screen. For an illustration of the approved balcony screen, please refer to Annexure 1 of this brochure

PENTHOUSE

2+1 BEDROOM (DUAL KEY)

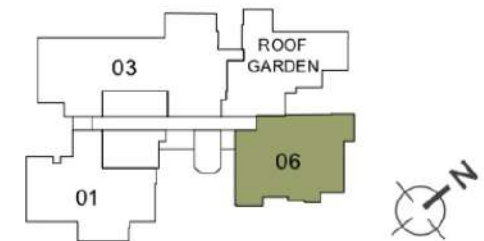


Type PH1

#28-06

128 sqm / 1378 sqft

(incl. void 20 sqm / 214 sqft)



Plans are not to scale and subject to any changes as may be required or approved by the relevant authorities and do not form part of an offer or contract. All floor areas indicated are inclusive of AC Ledge, Balcony and Strata Void where applicable. All floor areas are estimates only and subject to final survey. The balcony shall not be enclosed unless with the approved balcony screen. For an illustration of the approved balcony screen, please refer to Annexure 1 of this brochure

PENTHOUSE

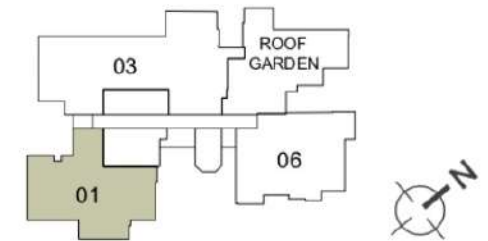
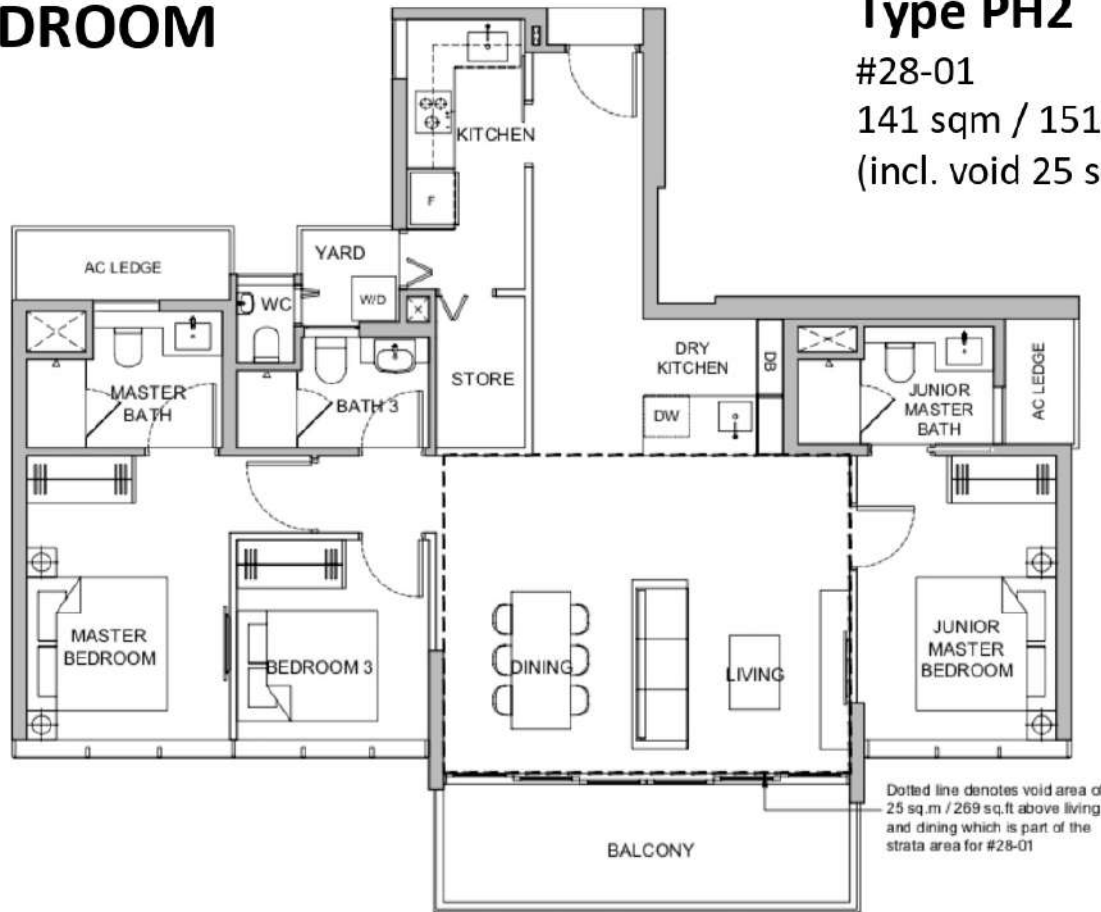
3 BEDROOM

Type PH2

#28-01

141 sqm / 1518 sqft

(incl. void 25 sqm / 269 sqft)



Plans are not to scale and subject to any changes as may be required or approved by the relevant authorities and do not form part of an offer or contract. All floor areas indicated are inclusive of AC Ledge, Balcony and Strata Void where applicable. All floor areas are estimates only and subject to final survey. The balcony shall not be enclosed unless with the approved balcony screen. For an illustration of the approved balcony screen, please refer to Annexure 1 of this brochure

PENTHOUSE

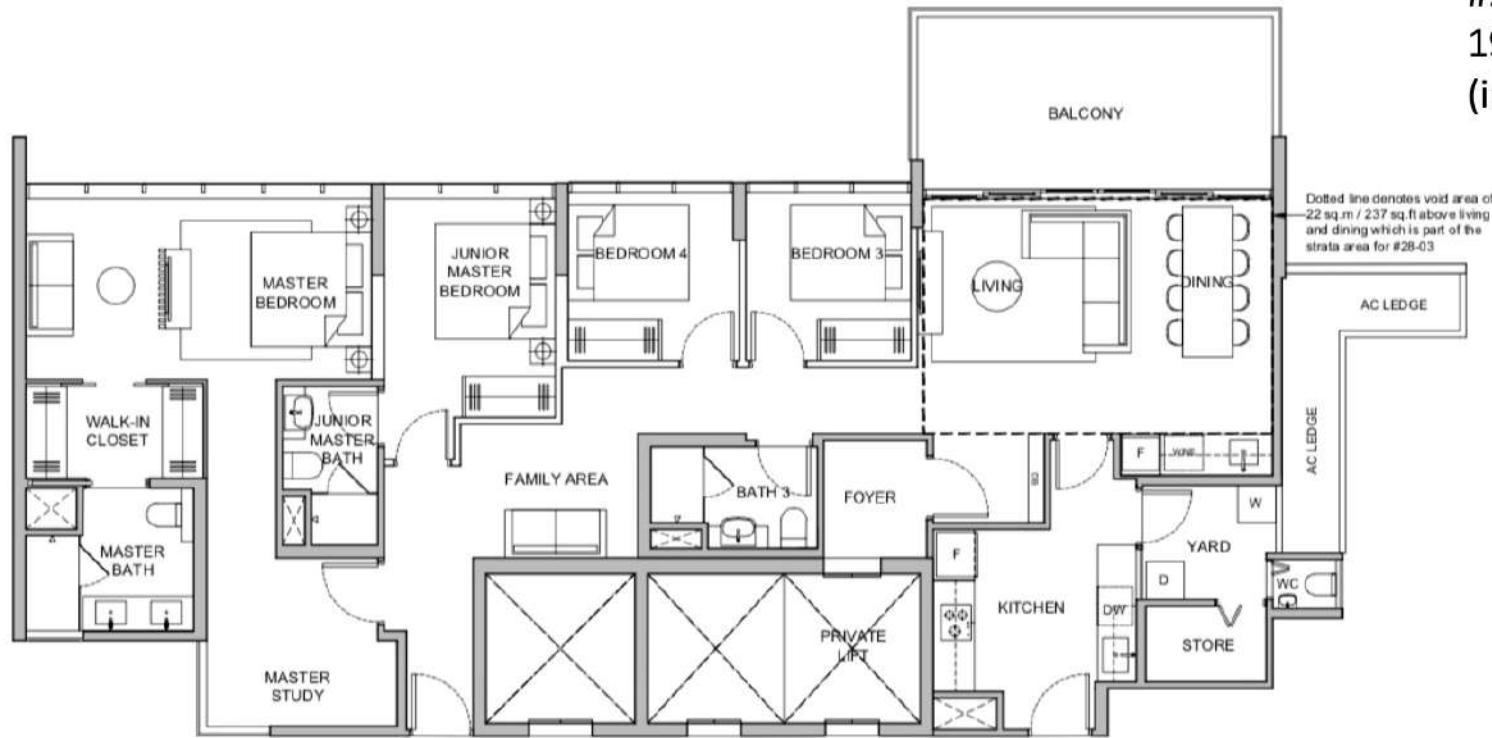
4 BEDROOM + FAMILY + STUDY

Type PH3

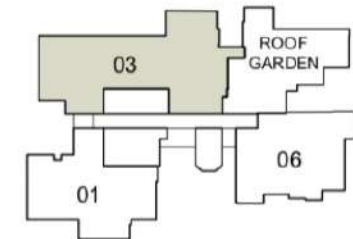
#28-03

190 sqm / 2049 sqft

(incl. void 22 sqm / 237 sqft)



Dotted line denotes void area of 22 sq.m / 237 sq.ft above living and dining which is part of the strata area for #28-03



Plans are not to scale and subject to any changes as may be required or approved by the relevant authorities and do not form part of an offer or contract. All floor areas indicated are inclusive of AC Ledge, Balcony and Strata Void where applicable. All floor areas are estimates only and subject to final survey. The balcony shall not be enclosed unless with the approved balcony screen. For an illustration of the approved balcony screen, please refer to Annexure 1 of this brochure